



US 20050168134A1

(19) **United States**

(12) **Patent Application Publication** (10) **Pub. No.: US 2005/0168134 A1**

Nishikawa

(43) **Pub. Date: Aug. 4, 2005**

(54) **ELECTROLUMINESCENT DISPLAY DEVICE**

Publication Classification

(75) Inventor: **Ryuji Nishikawa, Gifu-shi (JP)**

(51) **Int. Cl.⁷ H01J 1/62**

(52) **U.S. Cl. 313/500**

Correspondence Address:

**Barry E. Bretschneider
Morrison & Foerster LLP
Suite 300
1650 Tysons Boulevard
McLean, VA 22102 (US)**

(57) **ABSTRACT**

In an organic electroluminescent display device having a touch panel function, the number of components is reduced and accuracy in positional detection of a pointing object is improved. A display portion, and light source portions and detecting portions respectively formed along sides of the display portion are formed on a same substrate to form a display panel. Then, first reflecting boards which reflect light emitted by the light source portions in a horizontal direction along an emissive surface of the display portion, and second reflecting boards which reflect the light reflected by the first reflecting boards and enters the light in the light detecting portions through a back surface of the display portion are respectively formed at ends of a storage capacitor of a display panel.

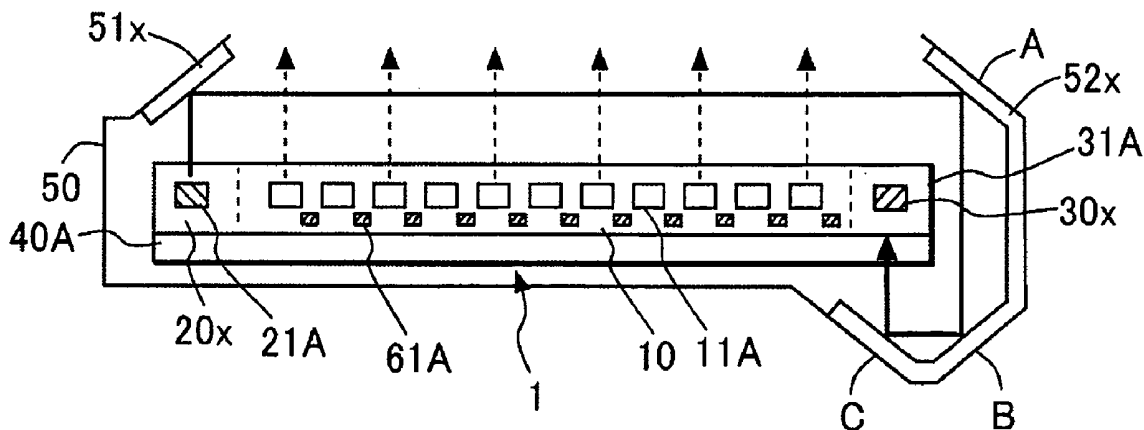
(73) Assignee: **Sanyo Electric Co., Ltd., Moriguchi-city (JP)**

(21) Appl. No.: **10/981,752**

(22) Filed: **Nov. 5, 2004**

(30) **Foreign Application Priority Data**

Dec. 10, 2003 (JP) 2003-411617



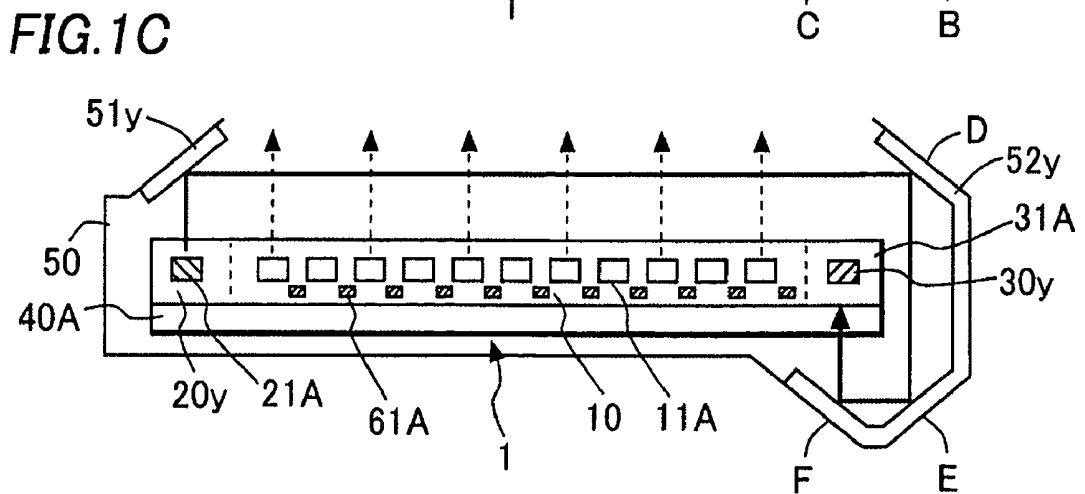
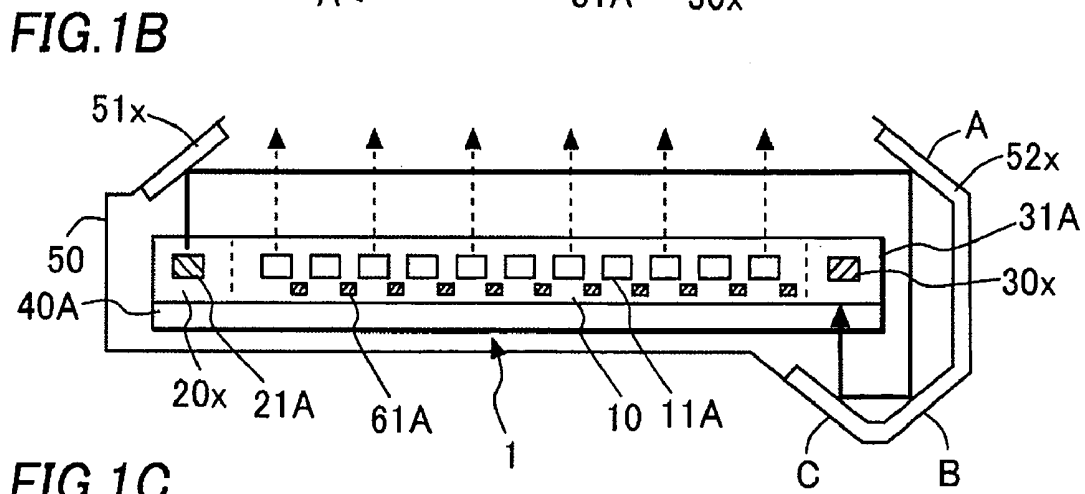
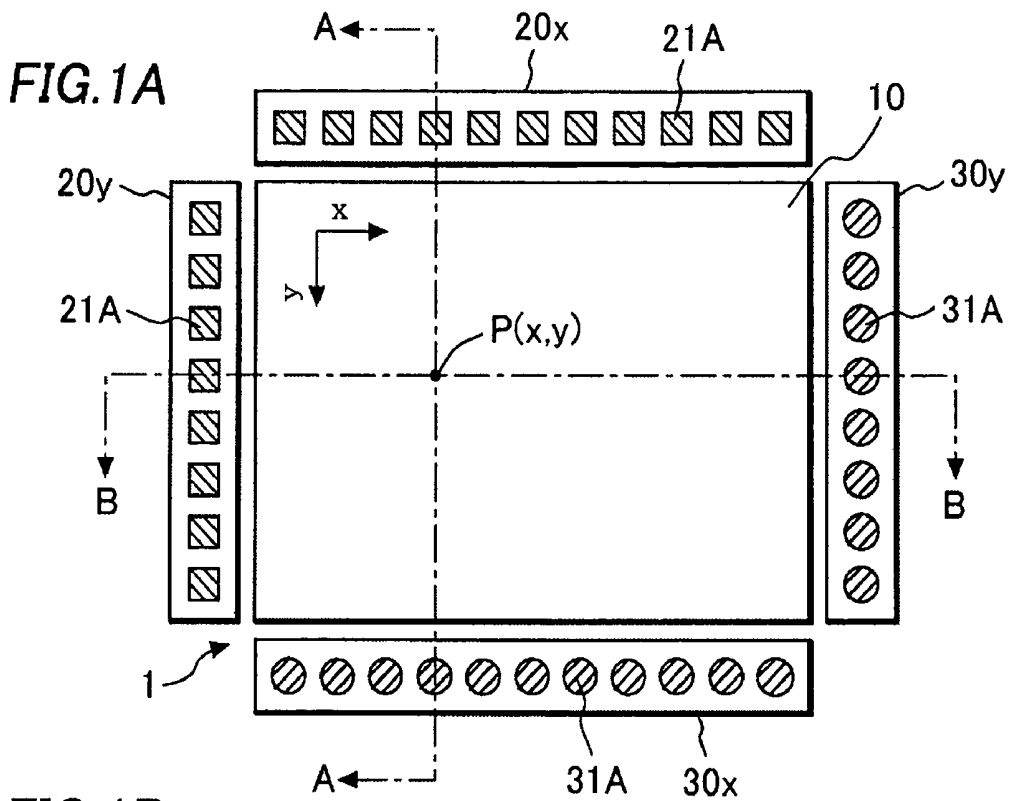


FIG. 2A

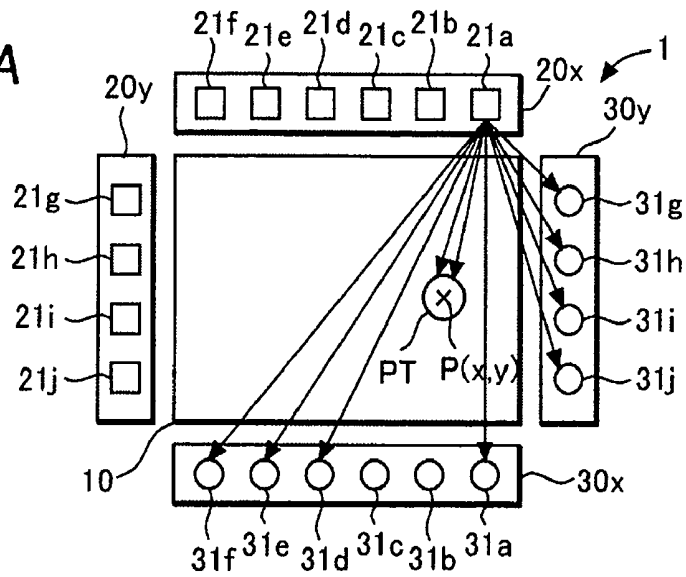


FIG. 2B

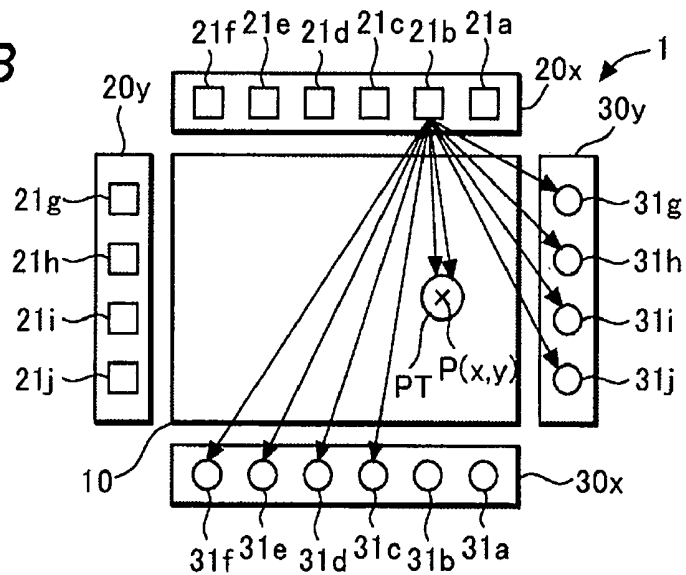


FIG. 2C

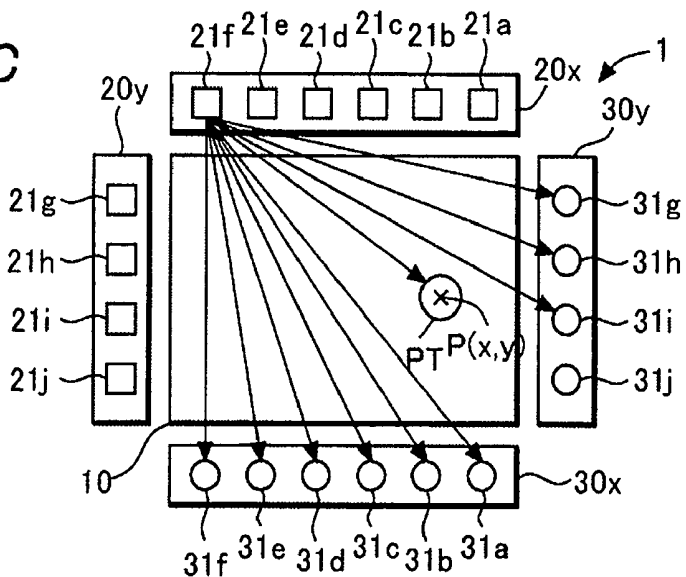


FIG. 3

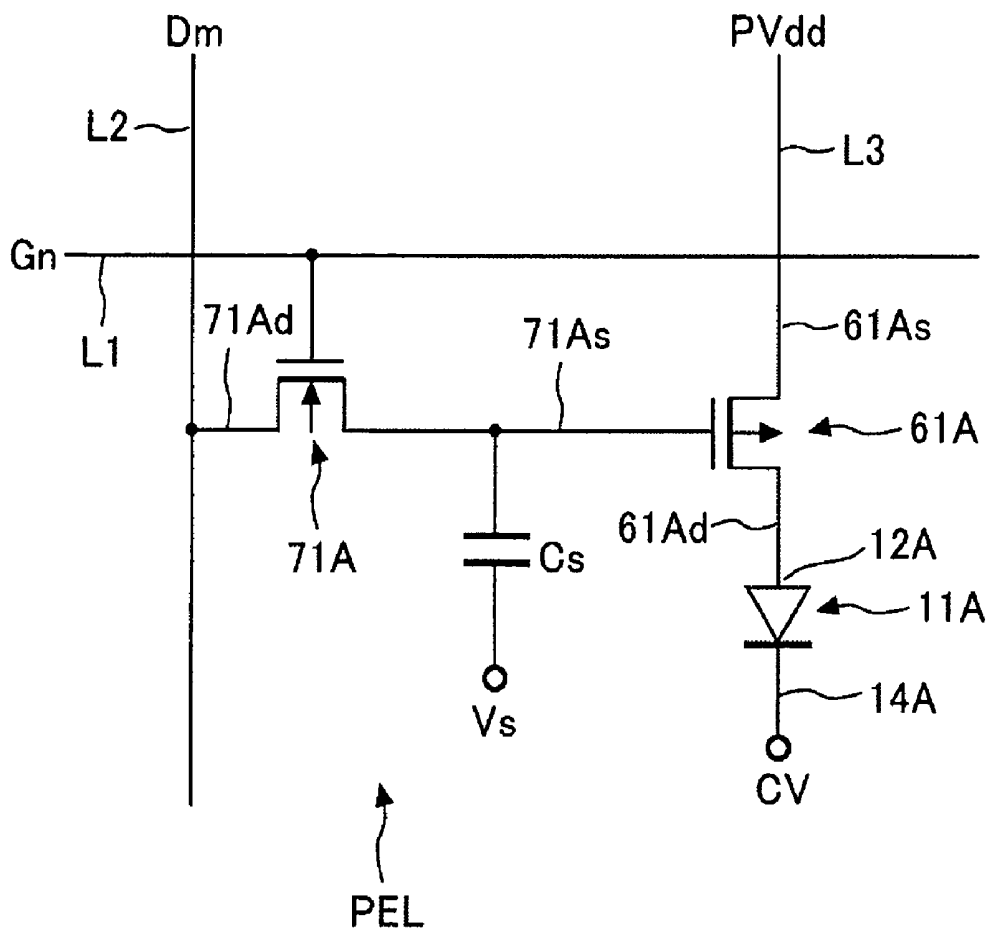


FIG. 5A

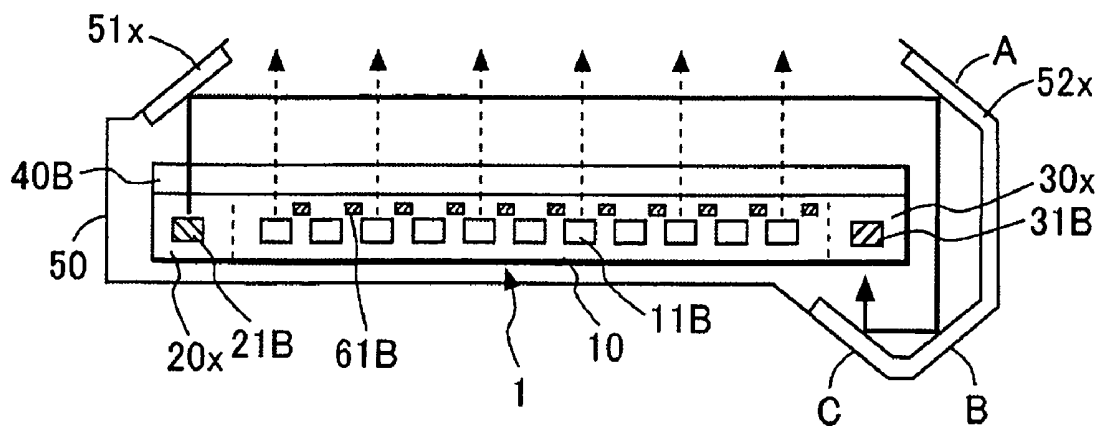


FIG. 5B

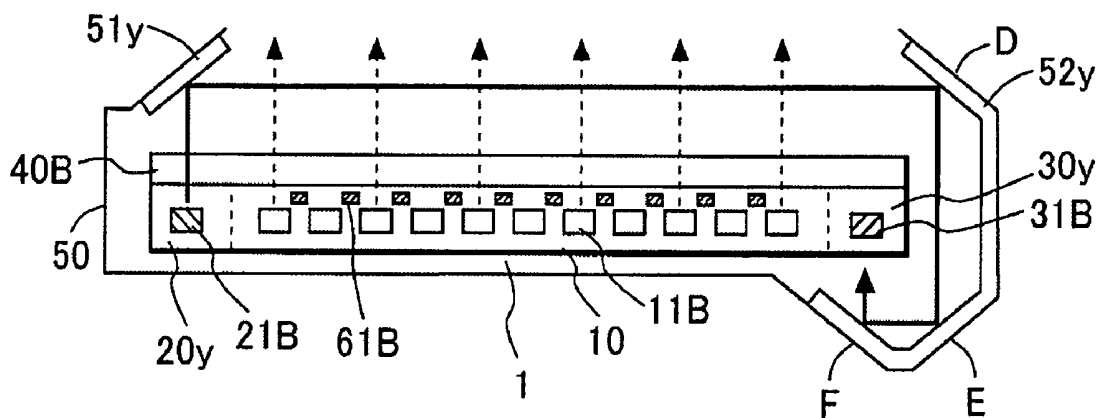
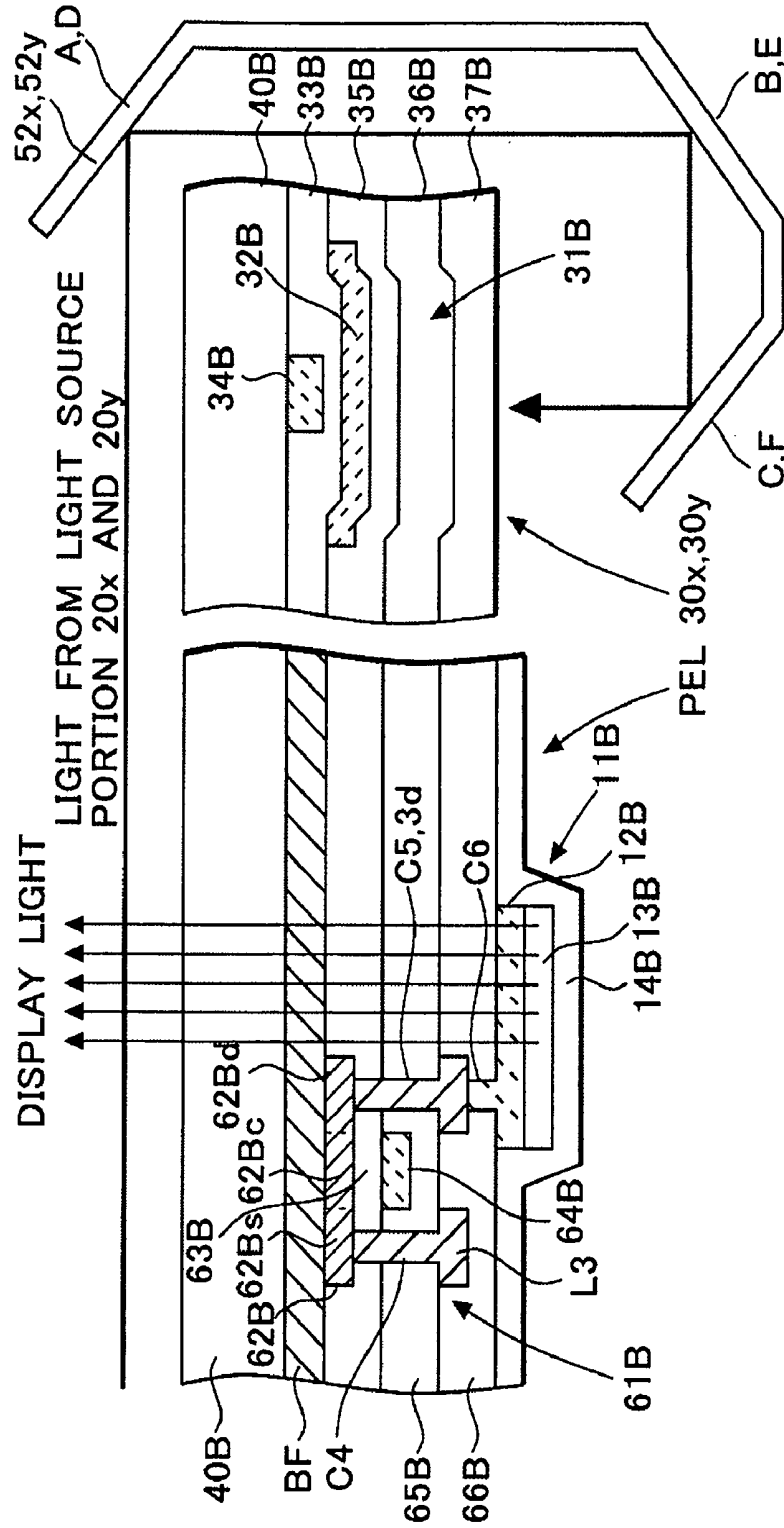


FIG. 6



ELECTROLUMINESCENT DISPLAY DEVICE

CROSS-REFERENCE OF THE INVENTION

[0001] This invention is based on Japanese Patent Application No. 2003-411617, the content of which is incorporated by reference in its entirety.

BACKGROUND OF THE INVENTION

[0002] 1. Field of the Invention

[0003] This invention relates to an electroluminescent display device, particularly to such a device having a touch panel function.

[0004] 2. Description of the Related Art

[0005] In recent years, organic electroluminescent (hereafter, referred to as EL) display devices using EL elements have been receiving attention as a display device substituting for a CRT or an LCD. Particularly, an organic EL display device having thin film transistors (hereafter, referred to as TFTs) as switching elements for driving the organic EL elements has been developed.

[0006] The LCD has a wide range of applications, for example, from displays for cellular phones and to those for personal digital assistants. Furthermore, a touch panel used with a finger or a pen-type pointing device has been developed.

[0007] Such technologies are described in Japanese Patent Application Publication Nos. 2002-175029 and 2002-214583. However, the organic EL display device has not been applied to touch panels used with the finger or the pen-type pointing device.

SUMMARY OF THE INVENTION

[0008] This invention provides an organic EL display device having a touch panel function, and is directed to improving accuracy in positional detection on a display portion of such an organic EL display device.

[0009] The invention provides an electroluminescent display device that includes a display portion having a plurality of display pixels arranged in a matrix. Each of the pixels has a display electroluminescent element and a driving transistor driving the display electroluminescent element. The device also includes a light source portion having a plurality of light source electroluminescent elements and provided along a first side of the display portion and a light detecting portion having a plurality of light sensors and provided along a second side of the display portion. The second side is opposite from the first side. The device further includes a first reflecting board reflecting light emitted by the light source portion in a horizontal direction along a front surface of the display portion and a second reflecting board reflecting the light reflected by the first reflecting board so as to lead the light into the light detecting portion through a back surface of the display portion.

BRIEF DESCRIPTION OF THE DRAWINGS

[0010] FIG. 1A is a plan view of an organic EL display device of a first embodiment of the invention, FIG. 1B is a schematic cross-sectional view of FIG. 1A along line A-A, and FIG. 1C is a schematic cross-sectional view of FIG. 1A along line B-B.

[0011] FIGS. 2A, 2B, and 2C are schematic plan views of a display panel showing an operation of the organic EL display device of FIGS. 1A, 1B, and 1C.

[0012] FIG. 3 is an equivalent circuit diagram of a display pixel of the organic EL display device of the first embodiment of the invention.

[0013] FIG. 4 is a schematic cross-sectional view of a display organic EL element and a light sensor of the first embodiment of the invention.

[0014] FIGS. 5A and 5B are schematic cross-sectional views of an organic EL display device of a second embodiment along line A-A and line B-B in the plan view, respectively.

[0015] FIG. 6 is a schematic cross-sectional view of a display organic EL element and a light sensor of the second embodiment of the invention.

DETAILED DESCRIPTION OF THE INVENTION

[0016] FIG. 1A is a plan view of the organic EL display device of a first embodiment of the invention. In this embodiment, a plurality of display pixels PEL (shown in FIG. 4) is arrayed in a matrix in a display portion 10 of a display panel 1. Each of the display pixels PEL has a display organic EL element 11A (e.g. top emission type organic EL element), a pixel selecting TFT (e.g. top gate type TFT) (not shown) selecting the display pixel PEL, a driving TFT 61A (e.g. top gate type TFT) driving the display organic EL element 11A, and so on.

[0017] As shown in FIG. 1A, the display portion 10 is shaped in a rectangle in the plan view. A first side and a second side of the display portion 10 in the plan view respectively correspond to an x coordinate and a y coordinate of a rectangular coordinate system formed of x and y axes. A light source portion 20x is placed along the side on the x axis. A plurality of light source organic EL elements 21A (e.g. top emission type organic EL element) is aligned in the light source portion 20x. Furthermore, a light detecting portion 30x is provided along a side opposite from the light source portion 20x. A plurality of light sensors 31A (e.g. top gate type TFT) is aligned in the light detecting portion 30x. The light sensor 31A generates a predetermined current or voltage when receiving light, and the current or the voltage is electrically detected so that the light can be detected.

[0018] Similarly, a light source portion 20y is placed along a side on a y-axis of the display portion 10. A plurality of light source organic EL elements 21A (e.g. top emission type organic EL element) is aligned in the light source portion 20y. A light detecting portion 30y is provided along a side opposite from the light source portion 20y. A plurality of light sensors 31A (e.g. top gate type TFT) is aligned in the light detecting portion 30y.

[0019] Next, a structure of a display panel 1 will be described with reference to a cross-sectional view thereof. FIG. 1B is a schematic cross-sectional view of FIG. 1A along line A-A, and FIG. 1C is a schematic cross-sectional view of FIG. 1A along line B-B.

[0020] As shown in FIGS. 1B and 1C, the display portion 10, the light source portions 20x and 20y, and the light

detecting portions **30x** and **30y** are provided on the same transparent glass substrate **40A**, being integrally formed as a display panel **1**. The light source organic EL elements **21A** of the light source portions **20x** and **20y** have the same structure (a structure of a top emission type organic EL element outputting light toward the direction opposite from the transparent glass substrate **40A**) as that of the display organic EL elements **11A** of the display portion **10** so that the light source organic EL elements **21A** and the display organic EL elements **11A** are formed by the same manufacturing steps. Furthermore, the light sensors **31A** of the light detecting portions **30x** and **30y** can be formed of TFTs so that the light sensors **31A** can be formed by the same manufacturing steps as the steps for manufacturing the pixel selecting TFTs and the driving TFTs **61A** in the display portion **10**. This reduces the number of components in the organic EL display device, preventing complexity of manufacturing steps.

[0021] This display panel **1** is placed in a container **50**, and the display portion **10** is exposed through a window of the container **50**. This display panel **1** is thus configured to emit display light of the display portion **10**.

[0022] A light reflecting board **51x** for reflecting light is provided above the light source portion **20x** inside the container **50** along a side of an x-axis of the display portion **10**. The light reflecting board **51x** reflects light, which is emitted in a vertical direction through a front surface of the display panel **1** from the light source organic EL element **21A** of the light source portion **20x**, in a horizontal direction along the front surface of the display panel **1**.

[0023] Furthermore, near the light detecting portion **30x** inside the container **50**, a reflecting board **52x** is provided so as to cover an edge portion of the display panel **1**, which contains the light sensors **31A**, as shown in FIG. 1B.

[0024] an upper side and a lower side of the light detecting portion **30x** from the side. The reflecting board **52x** is formed having three reflecting surfaces A, B, and C having predetermined reflecting angles. This reflecting board **52x** reflects light, which is incident horizontally along the front surface of the display panel **1**, in a vertical direction (toward backside direction of the light detecting portion **30x**) by the reflecting surface A above the light detecting portion **30x**. Furthermore, this reflected light is reflected in a horizontal direction along the back surface of the display panel **1** and then in a vertical direction (toward the front side direction of the light detecting portion **30x**) by the reflecting surface B and the reflecting surface C respectively, which are a part of the reflecting board **52x** placed below the light detecting portion **30x**. In this embodiment, all the reflecting angles are different.

[0025] When the light, which is emitted by the light source portion **20x** and reflected in a horizontal direction along the front surface of the display panel **1** by the reflecting board **51x**, is not blocked by a pointing object (not shown) such as a pen or a finger which touches or is placed close to the display portion **10**, the light is further reflected by the light reflecting board **52x** and enters the first light detecting portion **30x** through the back surface of the display panel **1**. The reflecting board **52x** is formed inside the container **50** which no external light enters, and each of the reflecting surfaces has such a predetermined reflecting angle that only light reflected in a horizontal direction along the front

surface of the display panel **1** can enter the light detecting portion **30x**. Therefore, external light incident at an angle different from the angle of the horizontal front surface of the display panel **1** does not enter the light detecting portion **30x**.

[0026] Similarly, a light reflecting board **51y** for reflecting light is provided above the light source portion **20y** inside the container **50** along a side of a y-axis of the display portion **10**. The light reflecting board **51y** reflects light, which is emitted in a vertical direction through the front surface of the display panel **1** from the light source organic EL element **21A** of the light source portion **20y**, in a horizontal direction along the front surface of the display panel **1**.

[0027] Furthermore, near the light detecting portion **30y** inside the container **50**, a reflecting board **52y** is provided so as to cover the edge of the display portion **1**. The reflecting board **52y** has three reflecting surfaces D, E, and F having predetermined reflecting angles. This reflecting board **52y** reflects light, which is incident horizontally along the front surface of the display panel **1**, in the vertical direction by the reflecting surface D above the light detecting portion **30y**. Furthermore, this reflected light is reflected in the horizontal direction along the back surface of the display panel **1** and then in a vertical direction by the reflecting surface E and the reflecting surface F respectively, which are a part of the reflecting board **52y** placed below the light detecting portion **30y**.

[0028] When the light, which is emitted by the light source portion **20y** and reflected in the horizontal direction along the front surface of the display panel **1** by the reflecting board **51y**, is not blocked by a pointing object such as a pen or a finger which touches or is placed close to the display portion **10**, the light is further reflected by the light reflecting board **52y** and enters the light detecting portion **30y** through the back surface of the display panel **1**. The reflecting board **52y** is formed inside the container **50** which no external light enters, and each of the reflecting surfaces has such a predetermined reflecting angle that only light reflected in a horizontal direction along the front surface of the display panel **1** can enter the light detecting portion **30y**. Therefore, external light incident at an angle different from the angle of the horizontal front surface of the display panel **1** does not enter the light detecting portion **30y**.

[0029] Next, a detection process of a point P corresponding to a position where the pointing object such as a pen or a finger touches or is placed close to the display portion **10** will be described with reference to FIGS. 1A, 1B, and 1C. The coordinates (x, y) of this point P are determined as follows. Assume that the x coordinate corresponds to the first side of the display portion **10**, and the y coordinate corresponds to the second side of the display portion **10**. Furthermore, light emitted from each of the light source organic EL elements **21A** of the light source portions **20x** and **20y** has directivity similar to those of laser beams.

[0030] First, the x coordinate of the point P is determined as described below. Light emitted in a vertical direction through the front surface of the display panel **1** from the light source organic EL element **21A** of the light source portion **20x** is reflected in a horizontal direction along the front surface of the display panel **1** by the reflecting board **51x**. The light reflected in a horizontal direction along the front surface of the display panel **1** is reflected in the vertical

direction relative to the front surface of the display panel **1** by the reflecting surface A formed in the reflecting board **52x** above the light detecting portion **30x**, when the light is not blocked by the pointing object touching or placed close to the display portion **10**. This reflected light is reflected in a horizontal direction again by the reflecting surface B of the reflecting board **52x** below the light detecting portion **30x**. Then, the light is reflected in the vertical direction by the reflecting surface C.

[0031] Therefore, the light emitted from the light source portion **20x** enters the light detecting portion **30x** through a backside of the display panel **1** and is detected by the corresponding light sensor **31A**, when the light is not blocked by the pointing object. On the other hand, when the pointing object touches or is placed close to the display portion **10**, the light emitted from the light source portion **20x** is blocked by the pointing object, so that the light sensor **31A** corresponding to this position does not detect the light. Therefore, the position of this light sensor **31A** which does not detect the light corresponds to the x coordinate of the point P on the display portion **10**.

[0032] The reflecting board **52x** is formed inside the container **50** which no external light enters, and each of the reflecting surfaces A, B, and C has such a predetermined reflecting angle that only light reflected in the horizontal direction along the front surface of the display panel **1** can enter the light detecting portion **30x**. Therefore, external light incident at an angle different from the angle of the horizontal front surface of the display panel **1** is not detected by the light sensor **31A** of the light detecting portion **30x**. This can reduce detection errors caused by external light, and improve accuracy in detection of the x coordinate of the point P.

[0033] Similarly, the y coordinate of the point P is determined as described below. Light emitted in a vertical direction through the front surface of the display panel **1** from the light source organic EL element **21A** of the light source portion **20y** is reflected in a horizontal direction along the front surface of the display panel **1** by the reflecting board **51y**. The light reflected in a horizontal direction along the front surface of the display panel **1** is reflected in the vertical direction relative to the front surface of the display panel **1** by the reflecting surface D formed in the reflecting board **52y** above the light detecting portion **30y**, when the light is not blocked by the pointing object touching or placed close to the display portion **10**. This reflected light is reflected in a horizontal direction again by the reflecting surface E of the reflecting board **52y** below the light detecting portion **30y**. Then, the light is reflected in the vertical direction by the reflecting surface F.

[0034] Therefore, the light emitted from the light source portion **20y** enters the light detecting portion **30y** through the back surface of the display panel **1** and is detected by the corresponding light sensor **31A**, when the light is not blocked by the pointing object. On the other hand, when the pointing object touches or is placed close to the display portion **10**, the light emitted from the light source portion **20y** is blocked by the pointing object, so that the light sensor **31A** corresponding to this position does not detect the light. Therefore, the position of this light sensor **31A** which does not detect the light corresponds to the y coordinate of the point P on the display portion **10**.

[0035] The reflecting board **52y** is formed inside the container **50** which no external light enters, and each of the reflecting surfaces D, E, and F has such a predetermined reflecting angle that only light reflected in the horizontal direction along the front surface of the display panel **1** can enter the light detecting portion **30y**. Therefore, external light incident at an angle different from the angle of the horizontal surface of the display panel **1** is not detected by the light sensor **31A** of the light detecting portion **30y**. This can reduce detection errors caused by external light, and improve accuracy in detection of the y coordinate of the point P.

[0036] When light emitted from each of the light source organic EL elements **21A** of the light source portions **20x** and **20y** does not have directivity similar to those of laser beams, the x and y coordinates of the point P (x, y) can be determined as described below.

[0037] That is, the x and y coordinates of the point P (x, y) are determined by sequentially switching the light source organic EL elements for emitting light, and by monitoring the positions of the light sensors which do not detect the light each time. A process of determining the x and y coordinates of the point P (x, y) in this case will be described with reference to **FIGS. 2A, 2B, and 2C**.

[0038] **FIGS. 2A, 2B, and 2C** are schematic plan views of the display panel **1** explaining an example of the process of determining the x and y coordinates of the point P (x, y) under the divergent light source. In **FIGS. 2A, 2B and 2C**, the numbers of the light source organic EL elements and the light sensors are smaller than the numbers shown in **FIG. 1A** for simplifying description.

[0039] As shown in **FIG. 2A**, light is emitted in the vertical direction through a transparent glass substrate **40A** (not shown) from a light source organic EL element **21** a provided in one end of the first light source portion **20x**. This light is reflected in the horizontal direction along the transparent glass substrate **40A** by the light reflecting board **51x** (not shown) provided above the light source portion **20x**. In a position where the light reflected in the horizontal direction is not blocked by the pointing object PT, the light is then reflected in the backside direction of the display panel **1** by the light reflecting board **52x** (not shown) provided above the light detecting portion **30x** to enter the light detecting portion **30x**. Furthermore, the light is reflected in the backside direction of the display panel **1** by the light reflecting board **52y** (not shown) provided above the light detecting portion **30y** to enter the light detecting portion **30y**.

[0040] The light entering the light detecting portions **30x** and **30y** is detected by the light sensors corresponding to positions where the light enters (light sensors **31a, 31d, 31e, 31f, 31g, 31h, 31i, and 31j** in an example of **FIG. 2A**).

[0041] On the other hand, where the light reflected in a horizontal direction is blocked by the pointing object PT, the light does not enter the light detecting portions **30x** and **30y**. That is, the light sensors (light sensors **31b and 31c** in an example of **FIG. 2A**) corresponding to the positions where the light does not enter do not detect the light.

[0042] Accordingly, the light sensors which do not detect the light are searched among the light sensors of the light detecting portions **30x** and **30y**, and x coordinates or y coordinates of those light sensors are stored in a storage

medium (not shown) such as a memory. When this operation is completed, the light source organic EL element **21a** is turned off the light.

[0043] Next, as shown in **FIG. 2B**, light is emitted from a light source organic EL element **21b** adjacent the light source organic EL element **21a**. Then, x coordinates or y coordinates of the light sensors (light sensors **31a** and **31b** in an example of **FIG. 2B**) which do not detect the light **20** among the light sensors of the light detecting portions **30x** and **30y** are stored in the memory (not shown) and so on. When this operation is completed, the light source organic EL element **21b** is turned off the light.

[0044] Similarly, light source organic EL elements **21c**, **21d**, **21e** and **21f** placed adjacent each other in the light source portion **20x** are sequentially switched to emit light and turn off the light. The light sensors which do not detect the light are searched each time, and x coordinates or y coordinates of the light sensors are stored in the memory (not shown) and so on. As shown in **FIG. 2C**, when light is emitted from the light source organic EL element **21f**, an x coordinate or a y coordinate of the light sensor (light sensor **31j** in an example of **FIG. 2C**) which does not detect the light is stored in the memory (not shown) and so on.

[0045] After a sequence of light emission and turn-off is completed from the light source organic EL element **21a** provided on one end of the light source portion **20x** to the light source organic EL element **21f** provided on another end thereof, the light emission and turn-off in the light source portion **20y** are sequentially performed from the light source organic EL element **21g** provided on one end thereof to the light source organic EL element **21j** provided on another end thereof. At each operation, the light sensors which do not detect the light are searched in the light detecting portions **30x** and **30y**, and x or y coordinates corresponding to the light sensors are monitored and stored in the memory and so on (not shown).

[0046] As described above, the light sensors of the light detecting portions **30x** and **30y**, which do not detect the light emitted from the light source portions **20x** and **20y**, are searched. The x coordinate or the y coordinate corresponding to each of the detected light sensors is monitored each time, and stored in the memory (not shown) and so on.

[0047] Then, the x or y coordinates of the light sensors which do not detect the light, which are monitored and stored each time, are all used to determine the x and y coordinates of the point P (x, y) representing the location of the pointing object PT that touches or is placed close to the display portion **10**. Then, the data stored in the memory and so on are initialized for next detection of the point P (x, y).

[0048] Next, a structure of a display pixel PEL having the display organic EL element **11A** and so on will be described in detail with reference to drawings. **FIG. 3** shows an equivalent circuit diagram of the display pixels PEL disposed in a matrix on the display portion **10**. It is noted that **FIG. 3** shows one display pixel PEL only.

[0049] A gate signal line **L1** supplying a gate signal Gn for selecting the display pixels PEL and a drain signal line **L2** supplying a display signal Dm for each of the display pixels PEL are crossing each other in the display pixel PEL. An organic EL element **11A** serving as a self-emissive element, a driving TFT **61A** for supplying a current to the organic EL

element **11A**, and a pixel selecting TFT **71A** for selecting the display pixel PEL are disposed in a region enclosed with these signal lines.

[0050] A gate of the pixel selecting TFT **71A** is connected with the gate signal line **L1** and supplied with the gate signal Gn therefrom, and a drain **71Ad** of the pixel selecting TFT **71A** is connected with the drain signal line **L2** and supplied with the display signal Dm therefrom. A source **71As** of the pixel selecting TFT **71A** is connected with a gate of the driving TFT **61A**. A source **61As** of the driving TFT **61A** is supplied with a positive power supply voltage PVdd from a power supply line **L3**. A drain **61Ad** of the driving TFT **61A** is connected with an anode **12A** of the organic EL element **11A**. A transparent cathode **14A** of the organic EL element **11A** is supplied with a power supply voltage CV.

[0051] The gate signal Gn is outputted from a vertical driver circuit (not shown) for switching the display pixel PEL in a vertical direction. The display signal Dm is outputted from a horizontal driver circuit (not shown) for controlling displays of the display pixels PEL arrayed in a horizontal direction.

[0052] The gate of the driving TFT **61A** is connected with a storage capacitor Cs. The storage capacitor Cs is provided to store the display signal Dm to be supplied to the display pixel PEL for a field period by storing electric charge corresponding to the display signal Dm.

[0053] The display pixel PEL described above is operated as follows. When the gate signal Gn becomes high level for one horizontal period, the pixel selecting TFT **71A** turns on. Then, the display signal Dm is applied from the drain signal line **L2** to the gate of the driving TFT **61A** through the pixel selecting TFT **71A**. Conductance of the driving TFT **61A** changes in accordance with the display signal Dm supplied to the gate thereof, and a drive current in accordance with the conductance is supplied to the organic EL element **11A** through the driving TFT **61A**, thereby lighting the organic EL element **11A**. When the driving TFT **61A** turns off in accordance with the display signal Dm supplied to the gate, an electric current does not flow in the driving TFT **61A**, thereby turning off the light of the organic EL element **11A**.

[0054] Next, structures of the display organic EL element **11A**, the driving TFT **61A**, and the light sensor **31A** of the display pixel PEL will be described with reference to a schematic cross-sectional view in detail.

[0055] **FIG. 4** is a schematic cross-sectional view of the display organic EL element **11A** and the driving TFT **61A** of the display pixel PEL, and the light sensor **31A** of the light detecting portions **30x** and **30y** and its neighborhood. **FIG. 4** shows one of the display pixels PEL arrayed in a matrix on the display portion **10**. The display organic EL element **11A** of the display pixel PEL is of top emission type, and the driving TFT **61A** for driving the display organic EL element **11A** is of top gate type. Although not shown, the pixel selecting TFT **71A** is of top gate type like the driving TFT **61A**. The light sensor **31A** is formed of a top gate type TFT.

[0056] These display organic EL element **11A**, the driving TFT **61A**, the pixel selecting TFT **71A**, and the light sensor **31A** are disposed on the same glass substrate **40A**. A configuration of these elements will be described in detail hereafter.

[0057] A buffer layer BF formed by laminating, for example, SiN_x and SiO_2 in this order, an active layer 62A formed by poly-crystallizing an a-Si film by laser beam irradiation, a gate insulating film 63A, and a gate electrode 64A made of metal having a high melting point such as chromium or molybdenum are formed on the transparent glass substrate 40A, in this order. A channel 62Ac, a source 62As, and a drain 62Ad are provided in the active layer 62A, the source 62As and the drain 62Ad being disposed on sides of the channel 62Ac respectively.

[0058] An interlayer insulating film 65A laminated with an SiO_2 film, an SiN_x film, and an SiO_2 film in this order is formed on the whole surfaces of the gate insulating film 63A and the gate electrode 64A. A contact hole C1 is provided in the interlayer insulating film 65A in a position corresponding to the source 62As, and the power supply line L3 to be supplied with a positive power supply voltage PVdd is provided therein by filling metal such as Al therein.

[0059] A contact hole C2 is provided in the interlayer insulating film 65A in a position corresponding to the drain 62Ad, and a drain electrode 3d is provided therein by filling the hole with a metal such as Al therein. Furthermore, a planarization insulating film 66A made of, for example, organic resin and planarizing a surface is provided on the whole surface. A contact hole C3 is provided in the planarization insulating film 66A in a position corresponding to the drain electrode 3d, and metal such as Al fills the hole so that the drain electrode 3d and the anode 12A of the display organic EL element 11A are in contact with each other. The anode 12A is an electrode having characteristics of reflecting light without transmission. The anode 12A is formed of Al and other metals, but can be formed of a single metal layer having a high reflectance, or a multilayered structure of ITO (indium tin oxide) and metal.

[0060] The display organic EL element 11A is formed in each of the display pixels PEL, being isolated as an island. This display organic EL element 11A is formed by laminating the anode 12A, an emissive layer 13A, and the transparent cathode 14A transmitting light emitted from the emissive layer 13A, in this order. The transparent cathode 14A is supplied with a power supply voltage CV (not shown). In this display organic EL element 11A, holes injected from the anode 12A and electrons injected from the transparent cathode 14A are recombined in the emissive layer 13A. The recombined holes and electrons excite organic molecules forming the emissive layer 13A to generate excitons. Then, light is emitted from the emissive layer 13A in a process of radiation of the excitons and released outside from the transparent cathode 14A, completing light emission.

[0061] The light sensor 31A is disposed on the transparent glass substrate 40A, which is also formed with the driving TFT 61A and the display organic EL element 11A, in a position corresponding to the light detecting portions 30x and 30y. The light sensor 31A is formed of a top gate type TFT.

[0062] That is, the buffer layer BF formed by laminating, for example, SiN_x and SiO_2 in this order, the active layer 32A formed by poly-crystallizing an a-Si film by laser beam irradiation, the gate insulating film 33A, the gate electrode 34A made of metal having a high melting point such as chromium or molybdenum, the interlayer insulating film

65A, and the planarization insulating film 66A are formed on the transparent glass substrate 40A, in this order. Furthermore, the transparent cathode 14A of the display organic EL element 11A can be extended on the planarization insulating film 66A. In this case, external light can be blocked from entering a back surface of the light sensor 31A.

[0063] Light from the light source portions 20x and 20y enters the active layer 32A through the back surface of the display panel 1, i.e. through an exposed surface of the transparent glass substrate 40A. The light sensor 31A electrically detects the light received by the active layer 32A, and outputs an electric current or a voltage corresponding to intensity of the light.

[0064] In the structure of this light sensor 31A, the gate electrode 34A for blocking light does not exist between the transparent glass substrate 40A where light enters and the active layer 32A. This increases an area of the active layer 32A receiving light and improves sensitivity in light detection compared with the case where the light sensor 31A is formed of a bottom gate type TFT (laminated with the transparent glass substrate, the gate electrode, the gate insulating film, and the active layer, in this order).

[0065] Furthermore, the driving TFT 61A and the light sensor 31A are formed of the top gate type TFTs so that these can be formed by the same steps, thereby preventing complexity of manufacturing steps. For example, manufacturing steps described below can be used.

[0066] The buffer layer BF is formed on the transparent glass substrate 40A, and then the active layers 32A and 62A are formed on the buffer layer BF. The gate insulating films 33A and 63A are formed on these active layers 32A and 62A. Furthermore, the gate electrodes 34A and 64A are formed on the gate insulating films 33A and 63A, and the interlayer insulating film 65A is formed on the gate insulating films 33A and 63A so as to cover the gate electrodes 34A and 64A. Then, the power supply line L3 and the drain electrode 3d are formed, and the planarization insulating film 66A is formed to cover the power supply line L3 and the drain electrode 3d. The anode 12A is formed on the planarization insulating film 66A, the emissive layer 13A is laminated on the anode 12A, and the transparent cathode 14A is formed thereon. Furthermore, the transparent cathode 14A of the display organic EL element 11A is formed on the planarization insulating film 66A above the light sensor 31A so that external light can be blocked from entering the back surface of the light sensor 31A.

[0067] As described above, in this embodiment, the display portion 10, the light source portions 20x and 20y, and the light detecting portions 30x and 30y are formed on the same transparent glass substrate 10A integrally, so that the number of the components of the organic EL display device and complexity of the manufacturing steps can be reduced. Furthermore, the reflecting boards 51x, 51y, 52x, and 52y lead light emitted by the light source portions 20x and 20y through the back surface of the light detecting portions 30x and 30y (the same side as the back surface of the display panel 1 where no external light enters), so that an effect of external light can be prevented when the emitted light is detected. It is noted that the effect of the external light can be further prevented by providing the black matrix on each of the organic EL elements in a region other than the light detecting portions 30x and 30y.

[0068] Accordingly, accuracy in positional detection of the pointing object PT that touches or is placed close to the display portion 10 can be improved. Furthermore, the active layer 32A of the light sensor 31A is placed in a position where light is not blocked by the gate electrode 34A (top gate type TFT), so that an area receiving light to be detected can be increased. This improves sensitivity in detection of entering light.

[0069] Next, a second embodiment of the invention will be described. In the first embodiment described above, the top emission type display organic EL element and the top emission type light source organic EL element, the top gate type driving TFT, and a light sensor formed of a top gate type TFT are integrally formed on the same substrate. In this embodiment, however, the display organic EL element and the light source organic EL element are of bottom emission type, the driving TFT is formed of a top gate type TFT, and the light sensor is formed of a bottom gate type TFT, all being integrally formed on the same substrate.

[0070] This embodiment will be described in detail with reference to drawings. The plan view of FIG. 1A applies to a plan view of this embodiment where the display organic EL element 11A, the light source organic EL element 21A, and the light sensor 31A in FIG. 1A are changed to the bottom emission type display organic EL element 11B, the bottom emission type light source organic EL element 21B, and the light sensor 31B formed of a bottom gate type TFT, respectively.

[0071] FIG. 5A is a schematic cross-sectional view of FIG. 1A for this embodiment along line A-A, and FIG. 5B is a schematic cross-sectional view of FIG. 1A for this embodiment along line B-B.

[0072] As shown in FIGS. 5A and 5B, the display portion 10, the light source portions 20x and 20y, and the light detecting portions 30x and 30y are provided on the same transparent glass substrate 40B, being integrally formed as a display panel 1. This configuration reduces the number of components of the organic EL display device, reducing complexity of manufacturing steps, in a manner similar to the first embodiment. The transparent glass substrate 40B of this embodiment is different from the transparent glass substrate 40A of the first embodiment, and is formed on the front surface of the display panel 1 as an emissive surface.

[0073] Structures of the container 50 and the reflecting boards 51x, 52x, 51y, and 52y are the same as those shown in the schematic cross-sectional views of FIGS. 1B and 1C of the first embodiment.

[0074] A detecting process of the point P corresponding to a position where the pointing object touches or is placed close to the display portion 10 in this embodiment is the same as that of the first embodiment.

[0075] Next, structures of the display organic EL element 11B, the driving TFT 61B, and the light sensor 31B of the display pixel PEL will be described in detail with reference to a schematic cross-sectional view. The operation of the display pixel PEL is the same as that of the first embodiment.

[0076] FIG. 6 is a schematic cross-sectional view of the display organic EL element 11B and the driving TFT 61B of the display pixel PEL, and the light sensor 31B of the light detecting portions 30x and 30y and its neighborhood. FIG.

6 shows one of the display pixels PEL arrayed in a matrix on the display portion 10. The display organic EL element 11B of the display pixel PEL is of bottom emission type, and the driving TFT 61B for driving the display organic EL element 11B is of top gate type. Although not shown, the pixel selecting TFT 71B is of top gate type in a manner similar to the driving TFT 61B. The light sensor 31B is formed of a bottom gate TFT.

[0077] These display organic EL element 11B, the driving TFT 61B, the pixel selecting TFT 71B, and the light sensor 31B are disposed on the same transparent glass substrate 40B. In this embodiment, differing from the first embodiment, light released by the display organic EL element 11B is emitted from the exposed surface of the transparent glass substrate 40B. These elements will be described in detail hereafter.

[0078] A buffer layer BF formed by laminating, for example, SiN_x and SiO_2 in this order, an active layer 62B formed by poly-crystallizing an a-Si film by laser beam irradiation, a gate insulating film 63B, and a gate electrode 64B made of metal having a high melting point such as chromium or molybdenum are formed on the transparent glass substrate 40B, in this order. A channel 62Bc, a source 62Bs, and a drain 62Bd are provided in the active layer 62B, the source 62Bs and the drain 62Bd being disposed on sides of the channel 62Bc, respectively.

[0079] An interlayer insulating film 65B laminated with an SiO_2 film, an SiN_x film, and an SiO_2 film in this order is formed on the whole surfaces of the gate insulating film 63B and the gate electrode 64B. A contact hole C4 is provided in the interlayer insulating film 65B in a position corresponding to the source 62Bs, and the power supply line L3 to be supplied with a positive power supply voltage PVdd is provided therein by filling the hole with a metal such as Al.

[0080] A contact hole C5 is provided in the interlayer insulating film 65B in a position corresponding to the drain 62Bd, and a drain electrode 3d is provided therein by filling the hole with a metal such as Al. Furthermore, a planarization insulating film 66B made of, for example, organic resin and planarizing a surface is provided on the whole surface. A contact hole C6 is provided in the planarization insulating film 66B in a position corresponding to the drain electrode 3d, and metal such as Al fills the hole so that the drain electrode 3d and the transparent anode 12B of the display organic EL element 11B are in contact with each other. The transparent anode 12B is a transparent electrode formed of ITO (indium tin oxide).

[0081] The display organic EL element 11B is formed in each of the display pixels PEL, being isolated as an island. This display organic EL element 11B is formed by laminating the transparent anode 12B, an emissive layer 13B, and the cathode 14B (e.g. formed of Al or magnesium-indium alloy) reflecting light emitted from the emissive layer 13B without transmission, in this order. The cathode 14B is supplied with a power supply voltage CV (not shown). Light emitted by the emissive layer 13B is released from the transparent glass substrate 40B through the transparent anode 14B.

[0082] A light sensor 31B is provided on the transparent glass substrate, which is also formed with the driving TFT 61B and the display organic EL element 11B, in a position

corresponding to the light detecting portions **30x** and **30y**. The light sensor **31B** is formed of a bottom gate type TFT.

[0083] The gate electrode **34B** made of metal having a high melting point such as chromium or molybdenum, the gate insulating film **33B** serving as the buffer layer BF, the active layer **32B** formed by poly-crystallizing an a-Si film by irradiating laser beams thereto, the insulating films **35B** and **36B**, and the planarization insulating film **37B** are formed on the transparent glass substrate **40B**, in this order. Light from the light source portions **20x** and **20y** enters the active layer **32B** through the back surface of the display panel **1**, i.e. through an exposed surface on the side of the cathode **14B**. The light sensor **31B** electrically detects the light received by the active layer **32B**, and outputs an electric current or a voltage corresponding to intensity of the light.

[0084] In the structure of this light sensor **31B**, the gate electrode **34B** for blocking light does not exist between the exposed surface of the back surface of the display panel **1** where light enters and the active layer **32B**. This increases the area of the active layer **32B** receiving light and improves sensitivity in light detection compared with a case where the light sensor **31B** is formed of a top gate type TFT (not shown) (laminated with the glass substrate, the active layer, the gate insulating film, and the gate electrode, in this order).

[0085] The light sensor **31B** and the driving TFT **61B** can be manufactured by manufacturing steps described below, for example. The gate electrode **34B** is formed on the transparent glass substrate **40B**, and then the buffer layer BF serving as the gate insulating film **33B** is formed to cover the gate electrode **34B**. The active layers **32B** and **62B** are formed thereon, and the insulating film **35B** serving as the gate insulating film **63B** is formed on the active layers **32B** and the **62B**. Furthermore, the gate electrode **64B** is formed thereon, and the insulating film **36B** serving as the interlayer insulating film **65B** is formed to cover the gate electrode **64B**. Then, the power supply line **L3** and the drain electrode **3d** are formed, and the planarization insulating films **37B** and **66B** are formed to cover the power supply line **L3** and the drain electrode **3d**. The transparent anode **12B** is formed on the planarization insulating film **66B**, the emissive layer **13B** is laminated on the transparent anode **12B**, and the cathode **14B** is formed thereon.

[0086] As described above, in this embodiment, the display portion **10**, the light source portions **20x** and **20y**, and the light detecting portions **30x** and **30y** are formed on the same transparent glass substrate integrally, so that the number of the components of the organic EL display device can be reduced and complexity of the manufacturing steps can be suppressed. Furthermore, the reflecting boards **51x**, **51y**, **52x**, and **52y** let light emitted by the light source portions **20x** and **20y** enter the back surface of the light detecting portions **30x** and **30y** (the same side as the back surface of the display panel **1** where no external light enters) in a manner similar to the first embodiment, so that a detection error caused by an effect of external light can be prevented. Accordingly, accuracy in positional detection of the pointing object that touches or is placed close to the display portion **10** can be improved. Furthermore, the active layer **32B** of the light sensor **31B** is placed in a position where light is not blocked by the gate electrode **34b** (bottom gate type TFT), so that an area receiving light to be detected can be increased. This improves sensitivity in detection of entering light.

[0087] The reflecting boards **52x** and **52y** provided near the light detecting portions **30x** and **30y** in the first and second embodiments have reflecting surfaces which reflects light incident horizontally along the display panel **1** in a vertical direction, next reflects the light in a horizontal direction, and last reflects the light in a vertical direction to enter the light in the light detecting portions **30x** and **30y** of the back surface of the display panel **1**. However, reflecting angles of the other reflecting surfaces A, B, D, and E can be angles other than vertical or horizontal as far as the light can vertically enter the light detecting portions **30x** and **30y** through the back surface of the display panel **1**.

[0088] The embodiments described above can be applied to a non-organic electroluminescent display device using a non-organic material as an emissive layer.

What is claimed is:

1. An electroluminescent display device comprising:

- a display portion comprising a plurality of display pixels arranged in a matrix, each of the pixels comprising a display electroluminescent element and a driving transistor driving the display electroluminescent element;
- a light source portion comprising a plurality of light source electroluminescent elements and provided along a first side of the display portion;
- a light detecting portion comprising a plurality of light sensors and provided along a second side of the display portion, the second side being opposite from the first side;
- a first reflecting board reflecting light emitted by the light source portion in a horizontal direction along a front surface of the display portion; and
- a second reflecting board reflecting the light reflected by the first reflecting board so as to lead the light into the light detecting portion through a back surface of the display portion.

2. The electroluminescent display device of claim 1, wherein the display electroluminescent element is of a top emission type, the driving transistor comprises a thin film transistor of a top gate type, and the light sensor comprises a thin film transistor of a top gate type.

3. The electroluminescent display device of claim 1, wherein the display electroluminescent element is of a bottom emission type, the driving transistor comprises a thin film transistor of a top gate type, and the light sensor comprises a thin film transistor of a bottom gate type.

4. The electroluminescent display device of claim 1, wherein the display portion, the light source portion and the light detecting portion are disposed on a substrate.

5. The electroluminescent display device of claim 1, wherein the first and second reflecting boards are provided along the first and second sides of the display portion, respectively.

6. The electroluminescent display device of claim 2, wherein the display portion, the light source portion and the light detecting portion are formed on a substrate.

7. The electroluminescent display device of claim 2, wherein the first and second reflecting boards are provided along the first and second sides of the display portion, respectively.

8. The electroluminescent display device of claim 3, wherein the display portion, the light source portion and the light detecting portion are formed on a substrate.

9. The electroluminescent display device of claim 3, wherein the first and second reflecting boards are provided along the first and second sides of the display portion, respectively.

10. The electroluminescent display device of claim 1, wherein the second reflecting board is configured to cover an edge of the display portion at the second side of the display portion.

* * * * *

专利名称(译)	电致发光显示装置		
公开(公告)号	US20050168134A1	公开(公告)日	2005-08-04
申请号	US10/981752	申请日	2004-11-05
[标]申请(专利权)人(译)	三洋电机株式会社		
申请(专利权)人(译)	SANYO ELECTRIC CO., LTD.		
当前申请(专利权)人(译)	SANYO ELECTRIC CO., LTD.		
[标]发明人	NISHIKAWA RYUJI		
发明人	NISHIKAWA, RYUJI		
IPC分类号	H01L51/50 G06F3/033 G06F3/041 G09F9/00 G09F9/30 G09G3/00 H01J1/62 H01L27/32 H01L29/786 H05B33/00 H05B33/14 H05B33/26		
CPC分类号	G06F3/0421 H01L27/323 H01L2251/5315 H01L31/147 H01L27/3244		
优先权	2003411617 2003-12-10 JP		
其他公开文献	US7098592		
外部链接	Espacenet USPTO		

摘要(译)

在具有触摸板功能的有机电致发光显示装置中，减少了部件的数量，并且提高了指向物体的位置检测的精度。显示部分，以及分别沿显示部分的侧面形成的光源部分和检测部分形成在同一基板上以形成显示板。然后，沿着显示部分的发射表面在水平方向上反射由光源部分发射的光的第一反射板，和反射由第一反射板反射的光并在光检测部分中进入光的第二反射板通过显示部分的后表面分别形成在显示板的存储电容器的端部。

